



Stainless Steel Submersible Pump

JDW 125, 160 & 215 Series



Type Key

JDW-125-01A

J-series

Pump O.D.
10:10 inch

Impeller
Stainless

Stage

18:18 stage

Delivery(m³/h)

1M: 1 m³ /h

2M: 2 m³/h

3M: 3 m³/h

JDW-Series 10" Stainless Steel Submersible Pumps

JDW- Series 10" SST submersible pumps are designed for heavy duty And high volume pumping applications. High efficient hydraulic Impeller and diffuser designs reduce energy requirements and Provide long and dependable service life, even in difficult environments

Pumped Liquids:

Clean, non-corrosive and non-abrasive liquids

Operating Conditions:

Max. liquid temperature: 60°C

Sand content: Max. 50 g/m³

JDW 10" Feature & Application

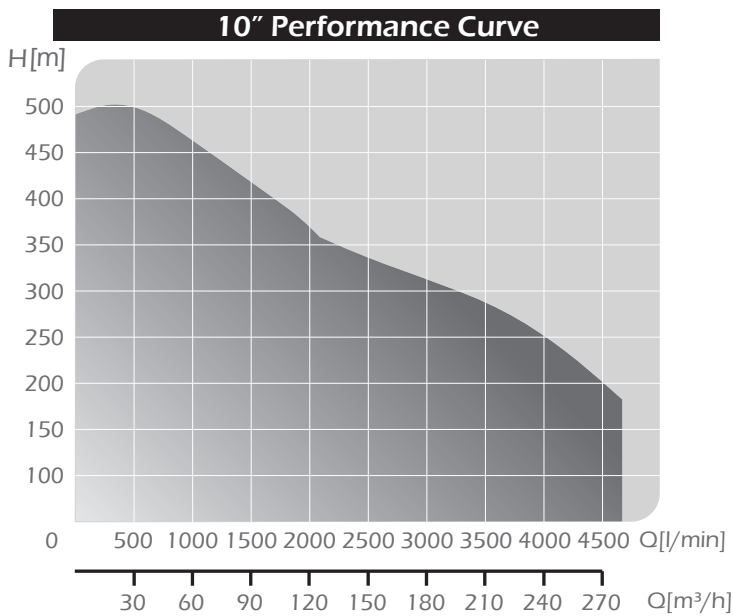
Feature

- > All stainless steel design & Built-in Jam-free check valve
- > NEMA Standards Mounting Specification
- > High quality shaft bearing for low friction
- > High wear resistance
- > SST Impeller & Difuser ensuring optimal performance
- > SST Strainer prevents the Entry of Sand & other extraneous material

Application

- > Municipal Water supply, treatment & distribution.
- > Agricultural-Irrigation, livestock watering, etc.
- > Industrial cooling, cleaning and production
- > Pressure boosting & Fountains, etc.

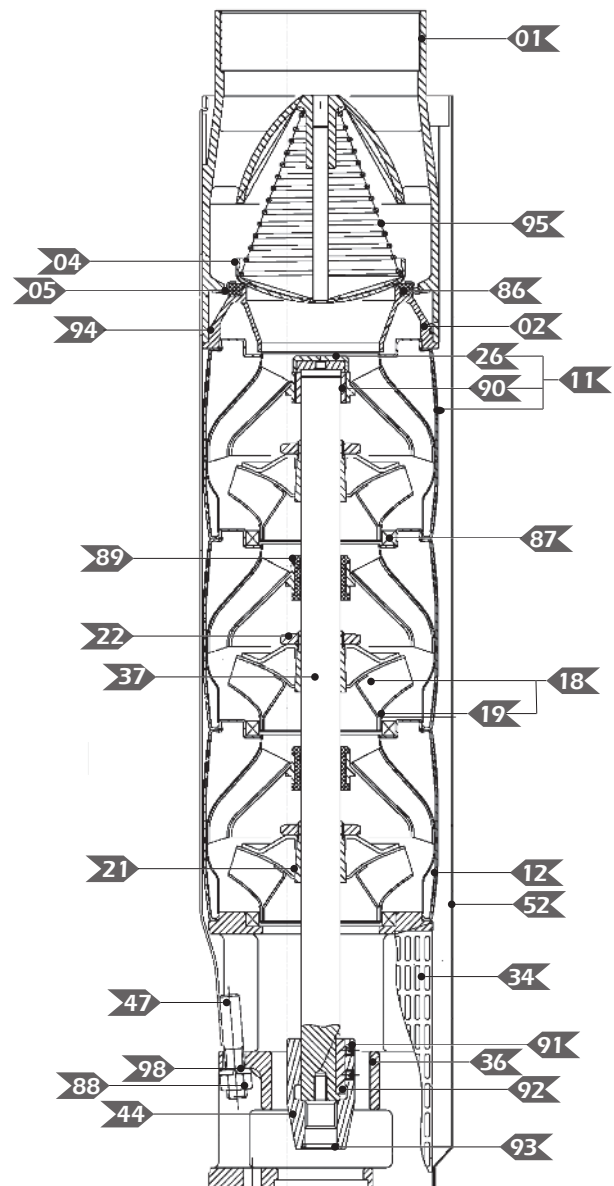
JDW 10" Performance Curve



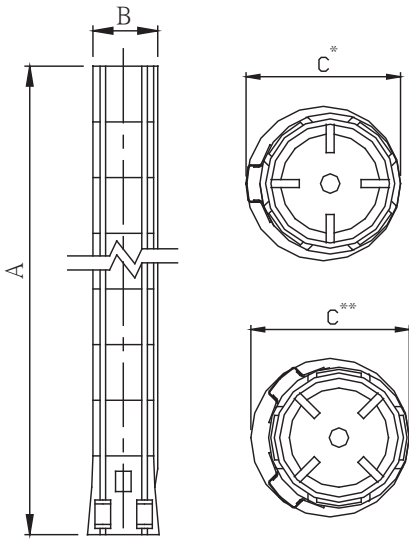
Example JDW-125

JDW 10" Parts & Material List

Parts and Material List			
No	Part	Material	Standard
01	Discharge	Stainless Steel	304
02	Lower Valve Seat Retainer	Stainless Steel	304
04	Valve Cup	Stainless Steel	304
05	Upper Valve Seat Retainer	Stainless Steel	304
11	Top Diffuser	Stainless Steel	304
12	Diffuser	Stainless Steel	304
18	Impeller	Stainless Steel	304
19	Ring of Impeller	Stainless Steel	304
21	Split Cone	Stainless Steel	304
22	Split Cone Nut	Stainless Steel	304
26	Spacing	Carbon/Graphite/PTFE	
34	Strainer	Stainless Steel	304
36	Suction Interconnector	Stainless Steel	304
37	Pump shaft	Stainless Steel	431
44	Coupling	Stainless Steel	304
47	Strap	Stainless Steel	304
52	Cable Guard	Stainless Steel	304
86	Valve Seat	NBR	
87	Neck Ring	NBR+SUS 304	
88	Nut	Stainless Steel	304
89	Bearing	NBR	
90	Bearing	NBR+SUS 304	
91	Screw	Stainless Steel	304
92	Key	Stainless Steel	304
93	O-ring	NBR	
94	O-ring	NBR	
95	Spring	Stainless Steel	304
98	Spring Washer	Stainless Steel	304



JDW 10" Dimensions



Unit(mm)

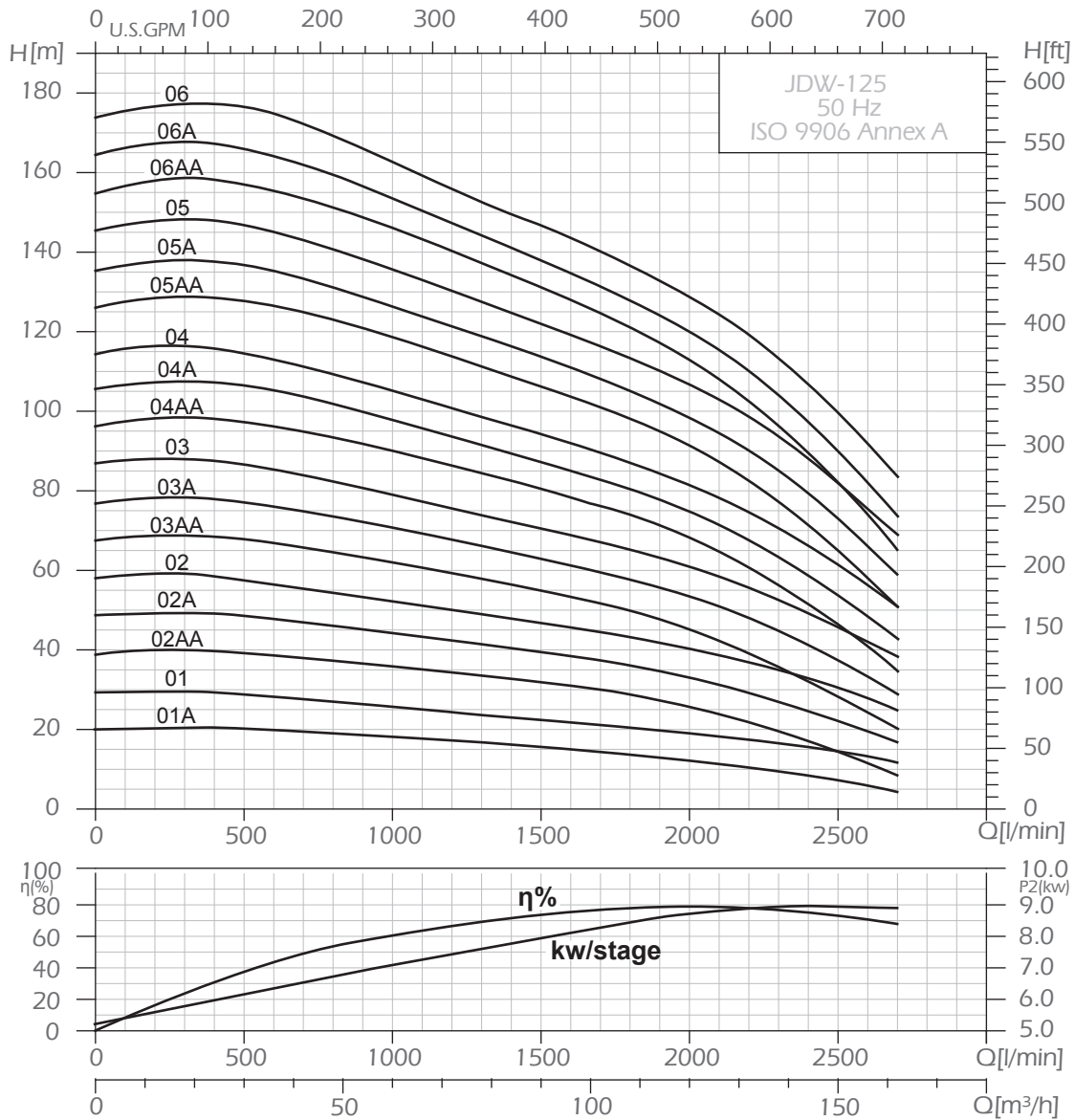
JDW-125 Dimensions						
Type	B 6"Connection(RP)			B 6"Flange		
	A	C*	C**	A	C*	C**
JDW-125-01A	652	211	218	652	222	226
JDW-125-01	652	211	218	652	222	226
JDW-125-02AA	807	211	218	807	222	226
JDW-125-02A	807	211	218	807	222	226
JDW-125-02	807	211	218	807	222	226
JDW-125-03AA	963	211	218	963	222	226
JDW-125-03A	963	211	218	963	222	226
JDW-125-03	963	211	218	963	222	226
JDW-125-04AA	1118	211	218	1118	222	226
JDW-125-04A	1118	211	218	1118	222	226
JDW-125-04	1118	211	218	1118	222	226
JDW-125-0AA	1274	213	218	1274	223	226
JDW-125-05-A	1274	213	218	1274	223	226
JDW-125-05	1274	213	218	1274	223	226
JDW-125-06AA	1429	213	218	1429	223	226
JDW-125-06A	1429	213	218	1429	223	226
JDW-125-06	1429	218	227	1429	229	232
JDW-125--07AA	1585	218	227	1585	229	232
JDW-12507A	1585	218	227	1585	229	232
JDW-125--07	1585	218	227	1585	229	232
JDW-12508AA	1740	218	227			
JDW-125-08A	1740	218	227			
JDW-125-08	1740	218	227			
JDW-125-09AA	1896	218	227			
JDW-125-09A	1896	218	227			
JDW-125-09	1896	218	227			
JDW-125-10AA	2051	218	227			
JDW-125-10A	2051	218	227			
JDW-125-10	2051	218	227			
JDW-125-11	2207	218	227			
JDW-125-12						
JDW-125-13						
JDW-125-14						
JDW-125-15						
JDW-125-16						

JDW-160 Dimensions						
Type	B 6"Connection(RP)			B 6"Flange		
	A	C*	C**	A	C*	C**
JDW-160-01A	652	211	218	652	222	226
JDW-160-01	652	211	218	652	222	226
JDW-160-02AA	807	211	218	807	222	226
JDW-160-02A	807	211	218	807	222	226
JDW-160-02	807	211	218	807	222	226
JDW-160-03AA	963	211	218	963	222	226
JDW-160-03A	963	211	218	963	222	226
JDW-160-03	963	211	218	963	222	226
JDW-160-04AA	1118	218	227	1118	229	232
JDW-160-04A	1118	218	227	1118	229	232
JDW-160-04	1118	218	227	1118	229	232
JDW-160-05AA	1274	218	227	1274	229	232
JDW-160-05A	1274	218	227	1274	229	232
JDW-160-05	1274	218	227	1274	229	232
JDW-160-06AA	1429	218	227	1429	229	232
JDW-160-06A	1429	218	227	1429	229	232
JDW-160-06	1429	218	227	1429	229	232
JDW-160-0AA	1585	218	227			
JDW-160-07A	1585	218	227			
JDW-160-07	1585	218	227			
JDW-160-08AA	1740	218	227			
JDW-160-08A	1740	218	227			
JDW-160-08	1740	218	227			
JDW-160-09AA	1896	218	227			
JDW-160-09A	1896	218	227			
JDW-160-09	1896	218	227			
JDW-160-10AA	2051	218	227			
JDW-160-10A	2181	227	247			
JDW-160-10	2181	227	247			
JDW-160-11	2337	227	247			
JDW-160-12	2492	227	247			
JDW-160-13	2648	227	247			
JDW-160-14	2803	227	247			
JDW-160-15						

JDW-215 Dimensions			
Type	B 6"Connection(RP)		
	A	C*	C**
JDW-215-01A	771.7	237	241
JDW-215-01	771.7	237	241
JDW-215-02AA	947.7	237	241
JDW-215-02A	947.7	237	241
JDW-215-02	947.7	237	241
JDW-215-03AA	1123.7	237	241
JDW-215-03A	1123.7	237	241
JDW-215-03	1123.7	237	241
JDW-215-04AA	1299.7	237	241
JDW-215-04A	1299.7	237	241
JDW-215-04	1299.7	237	241
JDW-215-05AA	1475.7	237	241
JDW-215-05A	1475.7	237	241
JDW-215-05	1475.7	237	241
JDW-215-06AA	1651.7	237	241
JDW-215-0	1651.7	237	241
JDW-215-06	1651.7	237	241
JDW-215-07AA	1827.7	262	274
JDW-215-07A	1827.7	262	274
JDW-215-07	1827.7	262	274
JDW-215-08AA	2003.7	262	274
JDW-215-08A	2003.7	262	274
JDW-215-08	2003.7	262	274
JDW-215-09AA	2179.7	262	274
JDW-215-09A	2179.7	262	274
JDW-215-09	2179.7	262	274
JDW-215-10AA			
JDW-215-10A			
JDW-215-10			
JDW-215-11			

C* = Maximum diameter of pump with one motor cable
 C**= Maximum diameter of pump with two motor cable

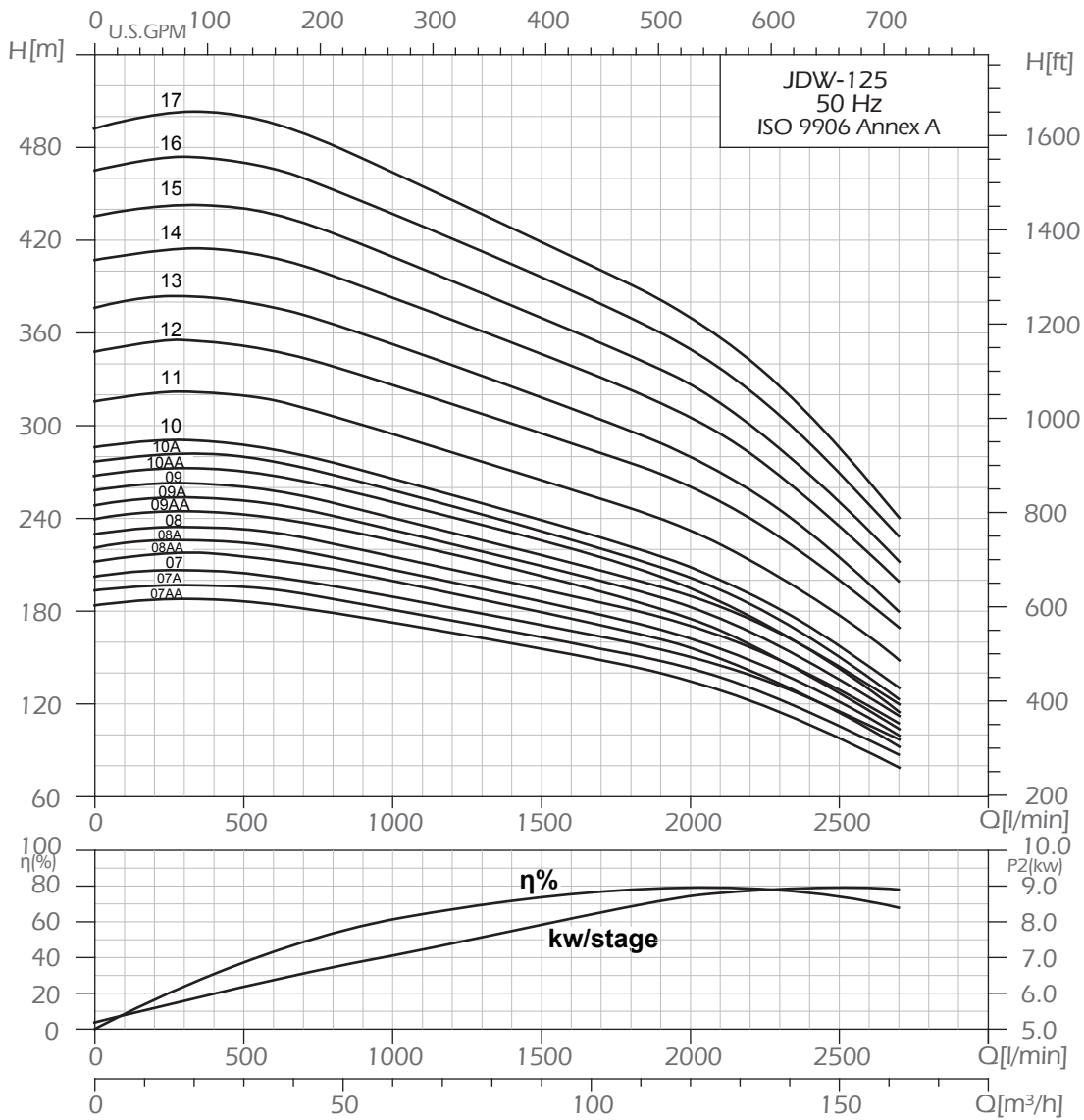
JDW - 125 Performance Curves



JDW-125 Selection Chart

Type	Stages	Discharge : Rp 6" or 6" Flange	Motor		MAX.current Amp	L/MIN M³/H	500	700	900	1100	1300	1500	1700	1900	2100	2300	2500	2700	Weight kg
			HP	KW															
JDW-125-01A	1	Discharge : Rp 6" or 6" Flange	10	7.5	28.5	16.5	30	42	54	66	78	90	102	114	126	138	150	162	29.2
JDW-125-01	1		15	11	41.8	24.2	29	19	18	18	17	16	15	14	12	10	7	4	29.26
JDW-125-02AA	2		17.5	13	50	29	49	38	37	36	34	32	30	28	24	20	15	9	35.64
JDW-125-02A	2		25	18.5	69	40	58	48	46	44	41	39	38	35	32	28	22	17	35.7
JDW-125-02	2		30	22	81	47	68	56	54	52	49	47	44	42	39	35	31	25	35.76
JDW-125-03AA	3		30	22	81	47	77	66	64	61	58	55	52	48	43	36	29	20	42.14
JDW-125-03A	3		35	26	96	56	87	75	73	69	66	63	60	56	51	45	37	29	42.2
JDW-125-03	3		40	30	111	64	98	89	81	78	74	71	68	63	58	53	46	39	42.26
JDW-125-04AA	4		50	37	138	80	106	95	92	88	85	81	77	72	65	67	47	35	47.06
JDW-125-04A	4		50	37	138	80	115	104	100	96	92	87	83	78	72	64	54	43	48.64
JDW-125-04	4		50	37	138	80	128	112	108	103	98	94	89	84	78	71	62	51	51.94
JDW-125-05AA	5		60	45	154	89	137	125	121	116	112	107	101	95	87	78	65	51	48.7
JDW-125-05A	5		60	45	154	89	147	133	129	124	119	114	108	102	95	85	73	59	52
JDW-125-05	5		75	55	192	111	157	144	138	133	128	122	117	111	103	94	83	69	48.76
JDW-125-06AA	6		75	55	192	111	166	154	149	143	138	131	125	118	108	97	82	65	52.06
JDW-125-06A	6		75	55	192	111	176	162	156	151	144	138	132	125	116	104	90	74	55.14
JDW-125-06	6		85	63	240	139	173	166	159	153	147	140	133	124	114	100	84	56.94	

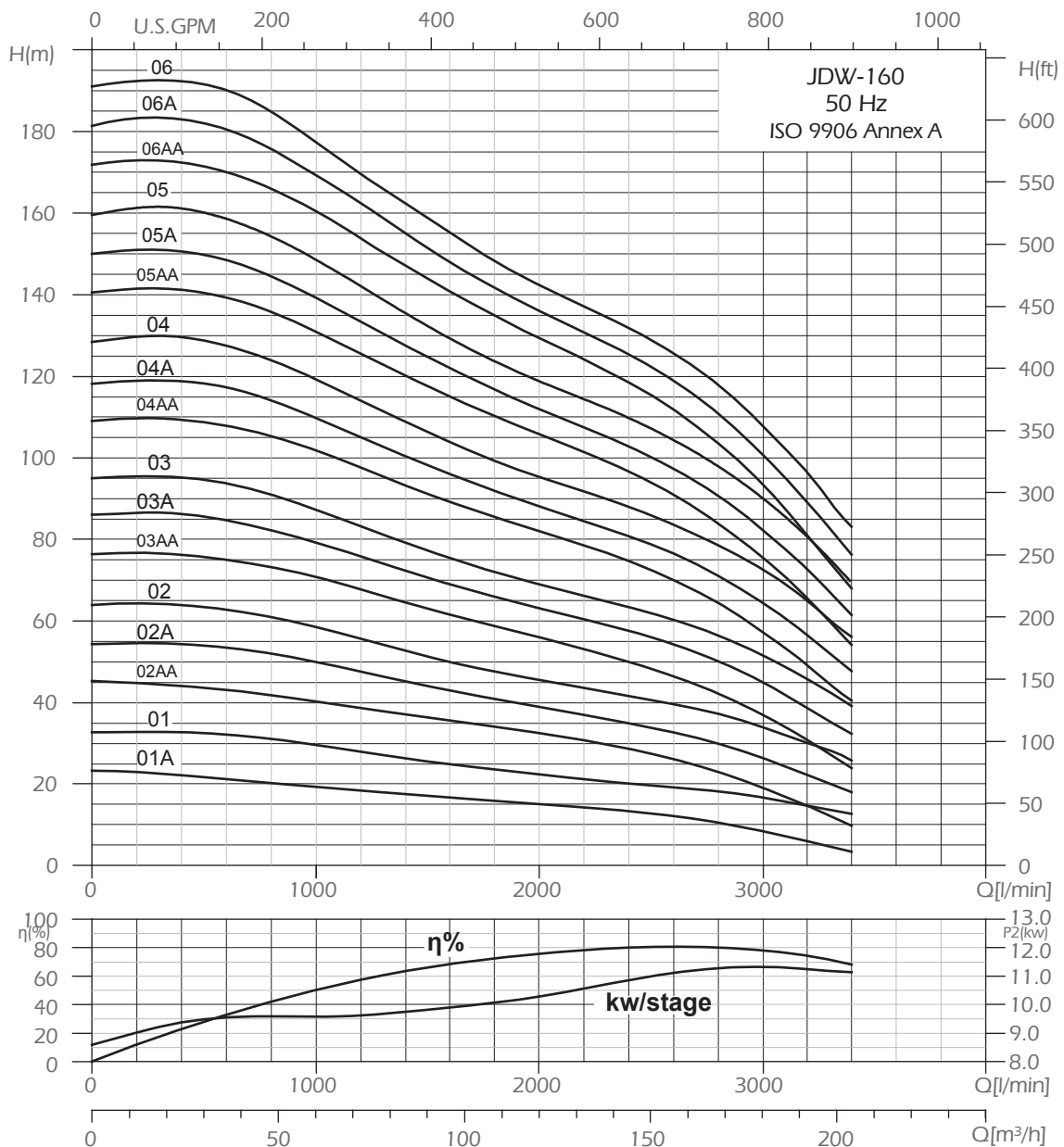
JDW - 125 Performance Curves



JDW-125 Selection Chart

Type	Stages	Motor		MAX.current Amp	L/MIN M ³ /H	H: TOTAL HEAD IN METERS													Weight kg
		HP	KW			220V	380V	500	700	900	1100	1300	1500	1700	1900	2100	2300	2500	
JDW-125-07AA	7	85	63	240	139	187	183	176	170	163	156	148	140	129	115	98	79	55.2	
JDW-125-07A	7	85	63	240	139	196	191	185	178	170	163	155	148	137	123	106	83	57	
JDW-125-07	7	100	75	256	148	205	200	194	186	178	171	164	155	145	132	116	98	57.06	
JDW-125-08AA	8	100	75	256	148	216	211	204	196	188	180	172	162	149	134	115	93	61.94	
JDW-125-08A	8	100	75	256	148	224	218	212	204	195	187	178	168	156	141	122	100	62	
JDW-125-08	8	100	75	256	148	233	227	220	212	203	194	186	176	165	149	130	108	62.06	
JDW-125-09AA	9	125	93	335	194	243	238	230	221	212	203	193	182	168	150	128	104	66.94	
JDW-125-09A	9	125	93	335	194	252	245	237	228	219	210	200	189	175	158	137	113	67	
JDW-125-09	9	125	93	335	194	261	255	246	236	226	217	207	196	183	166	145	120	67.06	
JDW-125-10AA	10	125	93	335	194	271	265	256	246	236	226	215	203	186	167	144	115	71.94	
JDW-125-10A	10	125	93	335	194	280	273	264	253	243	232	221	209	193	175	151	123	72	
JDW-125-10	10	125	93	335	194	288	281	271	261	250	239	227	215	201	182	159	131	72.06	
JDW-125-11	11	150	110	390	226	319	312	301	289	277	265	254	240	223	202	177	149	76.94	
JDW-125-12	12	175	132			352	345	333	320	308	295	283	269	251	228	200	169	77	
JDW-125-13	13	175	132			381	372	360	346	332	318	304	289	270	246	216	180	77.06	
JDW-125-14	14	200	147			413	404	390	375	361	346	332	316	295	269	236	200	81.94	
JDW-125-15	15	200	147			441	431	417	401	385	370	354	336	315	286	251	213	82	
JDW-125-16	16	230	170			471	460	445	428	412	396	379	361	338	308	270	229	82.06	
JDW-125-17	17	230	170			500	490	473	455	436	418	406	382	358	325	286	241	87.06	

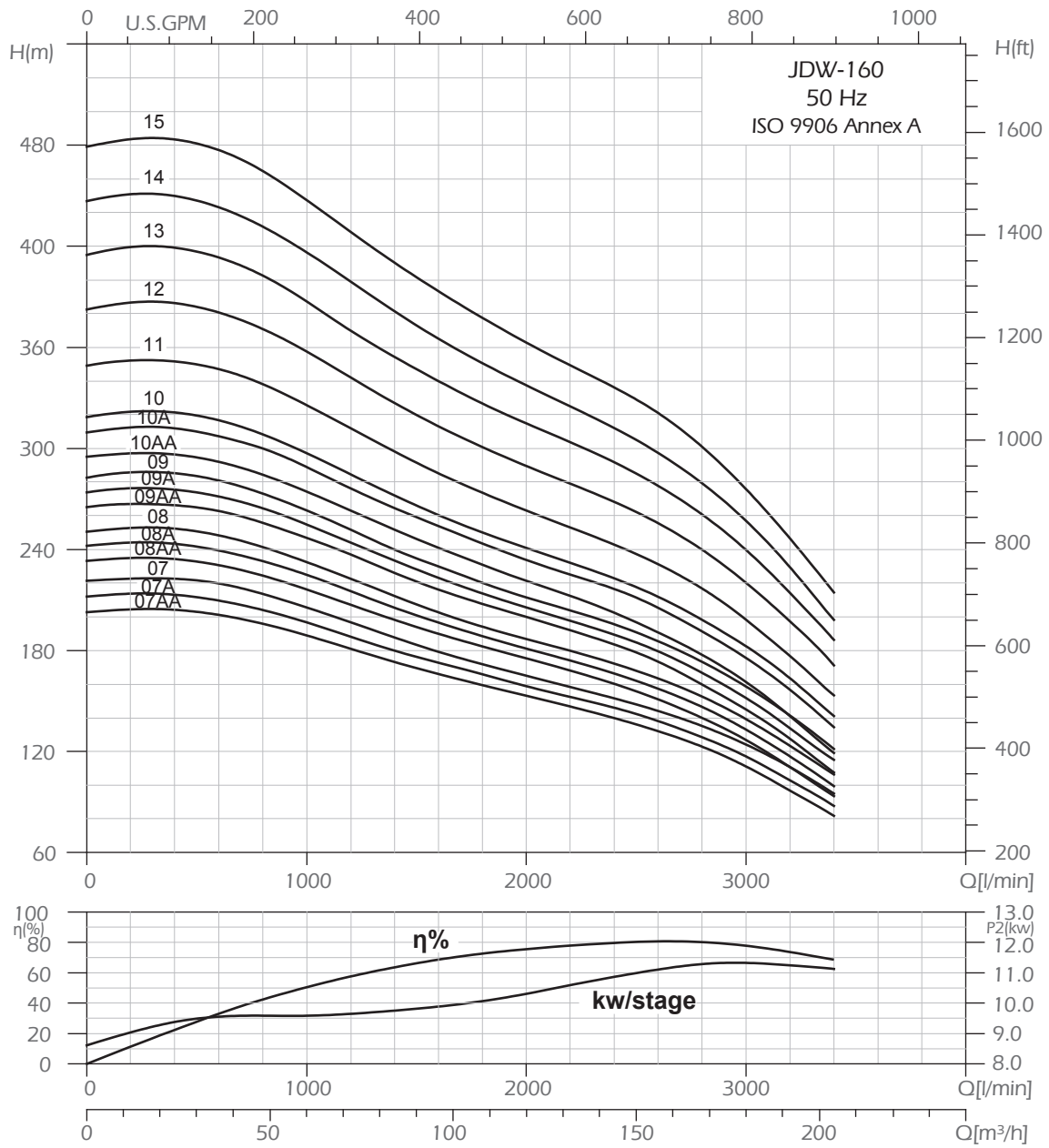
JDW - 160 Performance Curves



JDW-160 Selection Chart

Type	Stages	Motor		MAX.current		L/MIN														Weight
		HP	KW	220V	380V		600	900	1200	1500	1800	2100	2400	2700	3000	3300				
JDW-160-01A	1	12.5	9.2	36	20.9	H: TOTAL HEAD IN METERS	36	54	72	90	108	126	144	162	180	198	30.40			
JDW-160-01	1	17.5	13	50	29		21	20	18	17	16	15	13	12	8	5	30.40			
JDW-160-02AA	2	25	18.5	69	40		32	31	28	25	24	22	20	19	17	14	36.74			
JDW-160-02A	2	30	22	81	47		43	41	39	36	34	32	29	25	19	12	36.82			
JDW-160-02	2	35	26	96	56		53	51	48	44	41	38	35	32	27	20	36.82			
JDW-160-03AA	3	40	30	111	64		63	60	56	51	48	45	42	38	34	28	43.16			
JDW-160-03A	3	50	37	138	80		75	72	68	63	59	55	50	45	37	28	43.24			
JDW-160-03	3	50	37	138	80		85	81	76	71	66	62	58	52	45	36	43.24			
JDW-160-04AA	4	60	45	154	89		94	89	83	78	72	68	64	59	52	43	50.90			
JDW-160-04A	4	60	45	154	89		108	104	98	91	85	80	75	68	57	45	50.98			
JDW-160-04	4	75	55	192	111		117	112	105	98	92	86	81	74	65	52	50.98			
JDW-160-05AA	5	75	55	192	111		128	122	114	106	99	94	88	81	73	61	57.32			
JDW-160-05A	5	75	55	192	111		139	134	126	118	110	104	97	88	75	60	57.40			
JDW-160-05	5	85	63	240	139		148	142	134	125	117	110	103	94	82	67	57.40			
JDW-160-06AA	6	85	63	240	139		158	152	142	132	124	117	110	102	90	76	63.74			
JDW-160-06A	6	100	75	256	148		170	163	154	144	135	127	119	108	93	75	63.82			
JDW-160-06	6	100	75	256	148		180	173	162	152	142	133	125	115	101	83	63.82			
JDW-160-06	6	100	75	256	148		190	182	170	158	148	140	132	122	108	90	63.82			

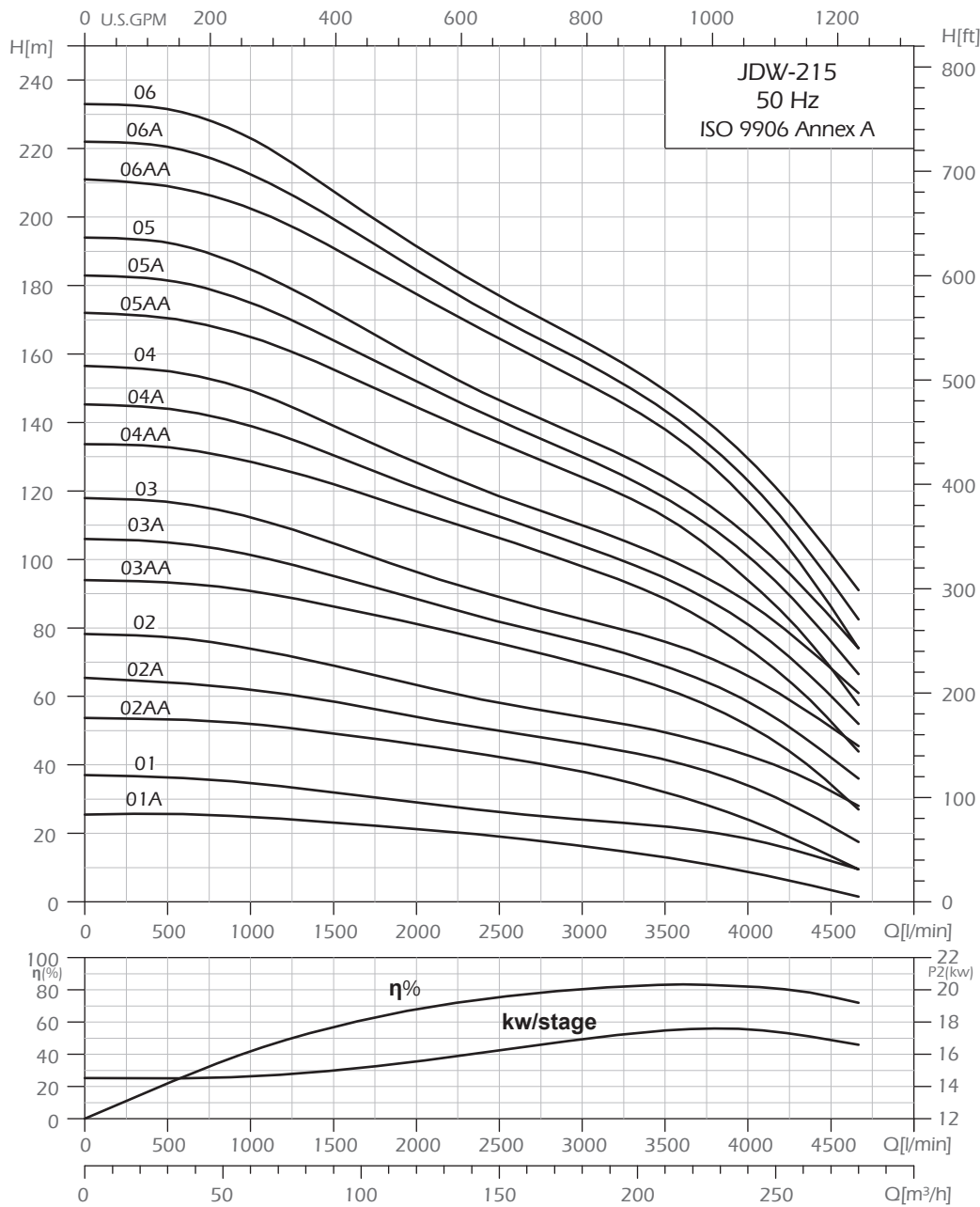
JDW - 160 Performance Curves



JDW-160 Selection Chart

Type	Stages	Motor				L/MIN M ³ /H	600	900	1200	1500	1800	2100	2400	2700	3000	3300	Weight kg
		HP	P2 KW	220V Amp	380V Amp												
JDW-160-07AA	7	100	75	256	148	200	193	181	169	159	150	140	128	111	89	70.16	
JDW-160-07A	7	125	92	335	194	210	201	188	177	166	156	146	134	117	96	70.24	
JDW-160-07	7	125	92	335	194	220	210	196	183	172	162	152	140	124	102	70.24	
JDW-160-08AA	8	125	92	335	194	230	220	208	194	183	172	160	146	126	102	76.58	
JDW-160-08A	8	125	92	335	194	239	229	215	201	189	177	167	152	133	108	76.66	
JDW-160-08	8	125	92	335	194	248	237	222	208	194	183	172	158	140	115	76.66	
JDW-160-09AA	9	150	110	390	226	263	252	237	222	208	196	183	167	146	117	83.00	
JDW-160-09A	9	150	110	390	226	272	260	244	228	214	202	189	174	152	124	83.08	
JDW-160-09	9	150	110	390	226	281	268	252	235	220	207	196	180	159	131	83.08	
JDW-160-10AA	10	150	110	390	226	292	280	263	246	231	217	202	184	161	131	89.42	
JDW-160-10A	10	175	132			307	295	277	259	244	230	216	199	176	145	102.62	
JDW-160-10	10	175	132			317	303	284	266	250	236	223	205	182	152	102.62	
JDW-160-11	11	175	132			347	332	312	292	274	258	243	224	199	165	109.04	
JDW-160-12	12	200	147			380	365	342	320	301	285	268	248	221	184	115.46	
JDW-160-13	13	230	170			413	395	371	347	327	309	292	269	240	200	121.88	
JDW-160-14	14	230	170			443	425	399	373	350	332	312	288	257	213	128.30	
JDW-160-15	15	255	190			477	456	428	402	377	356	336	311	276	231	132.80	

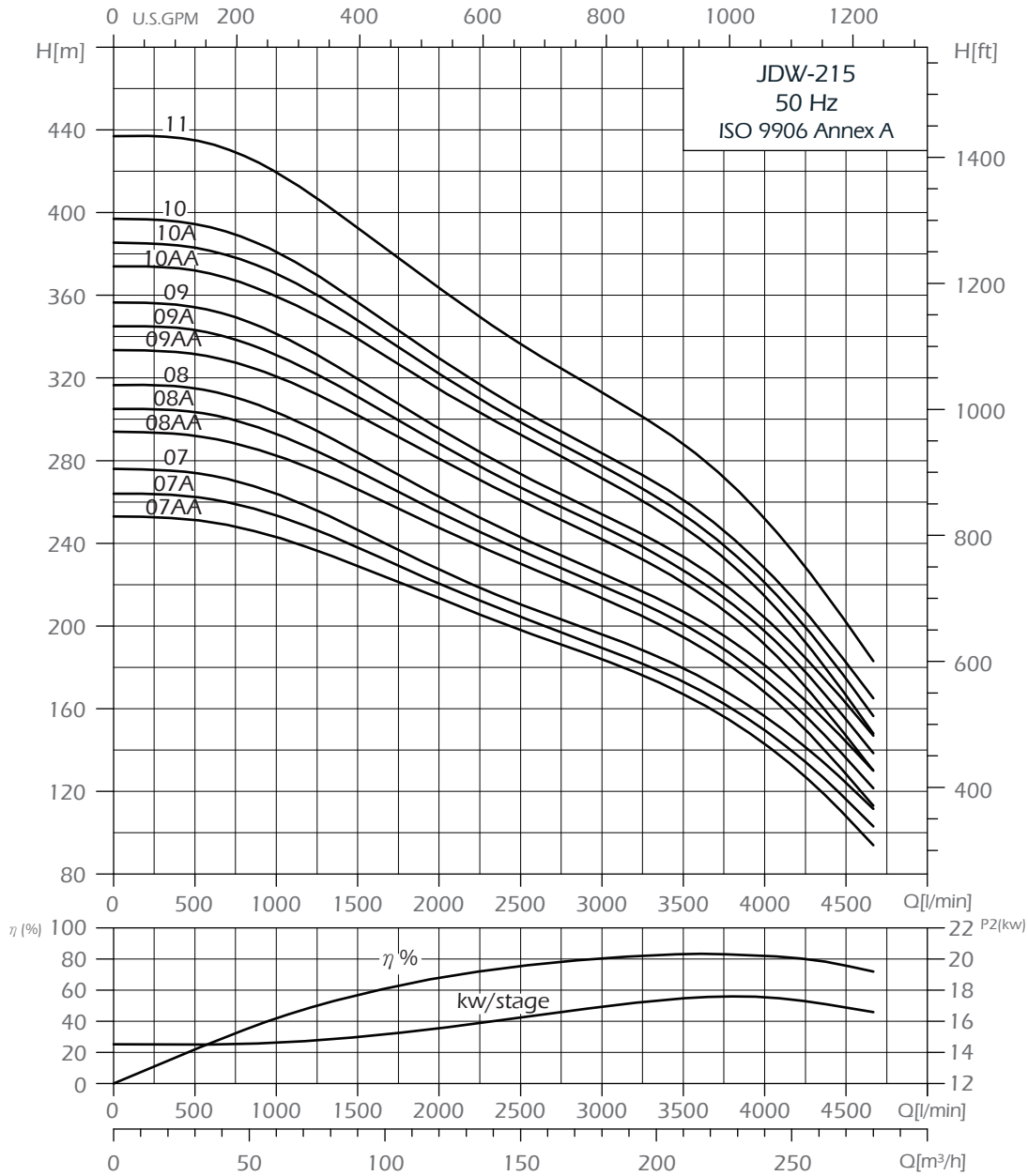
JDW - 215 Performance Curves



JDW-215 Selection Chart

Type	Stages	Motor				L/MIN	Flow Rate (Q)														Weight
		HP	KW	220V Amp	380V Amp		500	750	1000	1250	1500	2000	2500	3000	3500	4000	4500	kg			
JDW-215-01A	1	20	15	55	32	M ³ /H	30	45	60	75	90	120	150	180	210	240	270				
JDW-215-01	1	25	18.5	69	40	H: TOTAL HEAD IN METERS	36.5	36	35	33	32	29	26	24	22	18	12	46.08			
JDW-215-02AA	2	40	30	111	64		53	52.5	52	50	49	46	42	38	32	24	14	56.12			
JDW-215-02A	2	50	37	138	80		64	63	62	60	58	54	50	46	41	34	22	56.12			
JDW-215-02	2	60	45	154	89		77	76	74	71	69	63	58	54	49	42	32	55.78			
JDW-215-03AA	3	75	55	192	111		93	92	90	88	86	81	75	69	62	51	34	65.60			
JDW-215-03A	3	75	55	192	111		105	103	101	98	95	88	82	76	69	58	42	65.60			
JDW-215-03	3	85	63	240	139		117	115	112	108	104	96	89	82	76	66	51	65.60			
JDW-215-04AA	4	100	75	256	148		133	131	128	125	122	114	106	98	88	74	53	75.42			
JDW-215-04A	4	100	75	256	148		144	142	139	135	130	121	112	104	94	81	60	75.42			
JDW-215-04	4	100	75	256	148		155	152	149	144	139	128	118	110	100	87	68	75.42			
JDW-215-05AA	5	125	93	335	194		170	168	165	160	155	144	134	124	112	94	68	85.80			
JDW-215-05A	5	125	93	335	194		181	179	175	170	164	152	140	130	118	101	76	85.80			
JDW-215-05	5	125	93	335	194		192	189	184	179	172	159	146	135	124	107	83	85.80			
JDW-215-06AA	6	150	110	390	226		209	206	202	197	191	178	164	152	138	117	86	96.18			
JDW-215-06A	6	150	110	390	226		220	217	212	206	199	184	170	158	143	123	93	96.18			
JDW-215-06	6	150	110	390	226		231	228	223	216	207	191	177	164	149	129	101	96.18			

JDW - 215 Performance Curves



JDW-215 Selection Chart

Type	Stages	Motor		MAX.current Amp	L/MIN M ³ /H	500	750	1000	1250	1500	2000	2500	3000	3500	4000	4500	Weight kg
		HP	KW			220V	380V	30	45	60	75	90	120	150	180	210	
JDW-215-07AA	7	175	132			251	248	243	236	229	213	198	184	167	143	108	111.24
JDW-215-07A	7	175	132			262	259	253	246	238	220	204	189	173	149	116	111.24
JDW-215-07	7	175	132			274	270	264	255	246	227	210	196	180	156	124	111.24
JDW-215-08AA	8	200	147			292	288	282	274	266	247	230	213	195	168	128	121.48
JDW-215-08A	8	200	147			303	299	293	284	275	255	236	219	201	174	136	121.48
JDW-215-08	8	200	147			315	310	303	294	284	262	243	225	207	181	144	121.48
JDW-215-09AA	9	230	170			331	327	320	312	302	281	260	242	221	191	146	131.72
JDW-215-09A	9	230	170			343	338	331	321	311	288	267	248	227	197	155	131.72
JDW-215-09	9	230	170			354	349	341	331	319	295	273	254	233	204	162	131.72
JDW-215-10AA	10	255	190			372	367	359	350	339	314	292	271	248	214	166	
JDW-215-10A	10	255	190			383	378	370	360	347	322	296	277	254	221	174	
JDW-215-10	10	255	190			394	389	381	369	356	329	305	283	261	228	182	
JDW-215-11	11	300	220			435	429	419	407	392	363	336	313	288	252	201	

