



WB WB2 WB400 Micro centrifugal pumps

General Data

Type WB/WB2

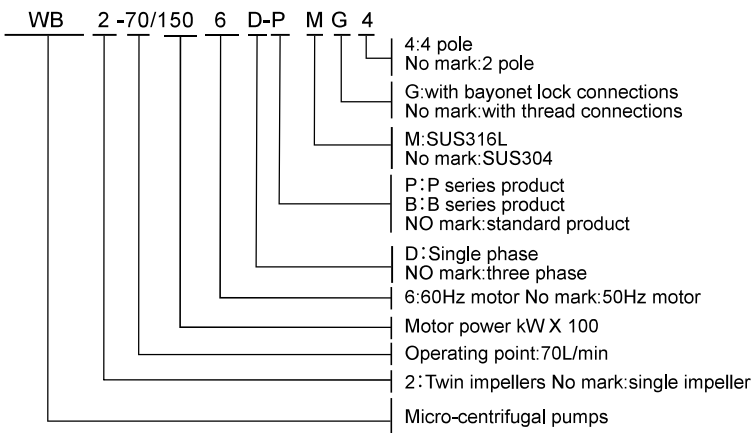
Application

- The pumps are suitable for transporting clean media which are non-aggressive to stainless steel SUS304 or SUS316L,
- Water supply systems Pressure boiler feeding,
- Pure water treating systems
- Pharmaceutical & food stuff
- Refining chemical industries
- Washing and sprinkling

Materials

Casing, back -cover , impeller and pump shaft: SUS304 or SUS316L stainless steel
 Bracket and motor cast:Aluminun-alloy
 Standard mechanical seal: NBR/ceramic/carbon
 (Special mechanical seal materials are available upon request)

Symbols



Motor

T.E.F.C.continuous dutyInsulation class:F or B
 Protection class:IP54 or IP55
 Ambient temperature range:-15°C~+40°C
 Altitude≤1000m
 Single phase version:220V, 50Hz,2900rpm
 With overload protector in singal phase motor
 Three phase version:380V, 50Hz,2900rpm
 Over loadprotector in three phase is avaiable upon request.

Pump Technical data

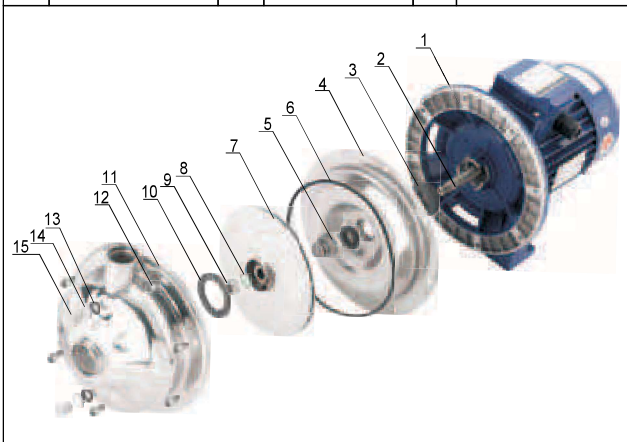
Suction size:G1 ¼ , G1½
 Discharge size:G1
 Max.working pressure:8bar
 Liquid temperature:-15°C ~ +80°C
 To avoid overload and danger the pump should be operated within the performance ranges.



Part List

Type WB

No.	Description	No.	Description	No.	Description
1	Motor	6	O ring	11	Casing
2	Key	7	Impeller	12	Bolt
3	"V" Slinger	8	Spring washer	13	O ring
4	Back cover	9	Impeller nut	14	"L" Washer
5	Mechanical seal	10	Wear ring	15	Priming/Drain bolt



Type WB2

No.	Description	No.	Description	No.	Description
1	Motor	9	Position plate	17	Guide plate front cover
2	Key	10	O ring	18	Casing
3	"V" Slinger	11	Wear ring	19	Bolt
4	Back cover	12	Guide plate back cover	20	O ring
5	Mechanical seal	13	Guide plate	21	"L" Washer
6	O ring	14	Impeller I	22	Priming/Drain bolt
7	Impeller II	15	Spring washer		
8	Shaft sleeve	16	Impeller nut		

